



JAMES ISLAND YACHT CLUB OPEN REGATTA
June 20 - 21, 2020
James Island Yacht Club
Charleston, SC

SAILING INSTRUCTIONS – JUNIOR COURSE
(version June 15, 2020)

1 RULES

The regatta will be governed by the rules as defined in *The Racing Rules of Sailing* (RRS).

2 NOTICES TO COMPETITORS

Notices to competitors will be posted on the official notice board located at the entrance of the club's Florida room and on the regatta website (<https://yachtscoring.com/emenu.cfm?eID=13008>).

3 CHANGES IN THE SAILING INSTRUCTIONS

- 3.1 Any change to the sailing instructions will be posted on Friday at the conclusion of the skipper's Zoom meeting, by 1100 on Saturday and on Sunday by 1000 hours.
- 3.2 Oral changes to the Sailing Instructions may be given on the water by hail from the Signal Boat under code flag "L" in accordance with RRS 90.2(c). Changes will be made before the next warning signal.

4 SIGNALS MADE ASHORE

- 4.1 Signals made ashore will be displayed from the club's flagpole.
- 4.2 When code flag "AP" is displayed ashore, "1 minute" is replaced with "not less than 30 minutes" in the RRS Race Signal "AP."

5 SCHEDULE OF RACES

- 5.1

Saturday – June 20	1200	Online registration closes
	1230	First warning signal
Sunday – June 21	1130	First warning signal
	1430	No warning signal made after this time
		Awards Ceremony – Following the Protest Time Limit
		Winners will be announced on Zoom and prizes mailed
- 5.2 An unlimited number of races are scheduled.

6 CLASS FLAGS

- 6.1 Class flags will be as follows:

Opti Red, White, Blue – white OPTI class flag	Opti Green – green OPTI class flag
O'Pen Skiff – white O'Pen skiff class flag	Jr. Club 420 - #1 numeral pennant

7 RACING AREA

- 7.1 The Junior racing area will be west of the James Island Yacht Club dock – see Attachment A.

8 THE COURSES

- 8.1 Illustration B show the courses, designated by letters, including the approximate angles between legs, the order in which marks are to be passed and the side on which each mark is to be left.
- 8.2 Numbers posted after courses W and T will indicate the number of laps to be sailed.

9 MARKS

Marks 1, 2, 3	Yellow Tetrahedron
Mark 1 – OPTI GREEN ONLY	Green Sphere
Starting and Finishing Mark	White Sphere
Change Marks	Orange Sphere

10 THE START

- 10.1 Races will be started using Appendix U (Audible-Signal Racing System) – 3 min starts.

- 10.2 The starting line will be between the staff displaying an orange flag on the RC signal boat on the starboard end and a port end starting mark.
- 10.3 Boats whose warning signal has not been made shall keep clear of the starting area and of all boats that are racing. Only the RC may protest a boat if this rule is broken.
- 10.4 A boat that has not met the definition of *start* within five minutes of her starting signal will be scored Did Not Start without a hearing. This is added to RRS A5.

11 THE FINISH

- 11.1 The finishing line will be between a staff displaying an orange flag on the RC signal boat at the starboard end and a port end finishing mark.
- 11.2 A boat intending to protest another boat shall notify the RC immediately upon finishing.

12 PENALTY SYSTEM

Appendix V shall apply.

13 PROTESTS AND REQUESTS FOR REDRESS

- 13.1 Protest forms are available at the race office. Protests shall be delivered there within the protest time limit, which starts when the Committee Boat reaches the dock and ends 30 minutes later. The same protest time limit applies to all protests by the RC and jury and to requests for redress. This is added to RRS 61.3 and 62.2.
- 13.2 Notices of scheduled protest or requests for redress hearings will be posted within 30 minutes of the protest time limit to inform competitors of hearings in which they are parties or may be parties affected by a request for redress. This will constitute notice to all parties under RRS 63.2 and its Prescription.
- 13.3 A list of boats being protested by the RC or PC will be posted before the protest time limit. This action by the RC or PC will serve the requirements of RRS 61.1(c).
- 13.4 Hearings will be held in the jury room, located in the meeting room.

14 SCORING

- 14.1 Low point scoring system will be used as described in RRS Appendix A except that one score will be excluded after six races have been sailed. This is in addition to RRS A2.
- 14.2 One (1) race is required to be completed to constitute a series.

15 SAFETY REGULATIONS

- 15.1 US Coast Guard approved floatation device must be worn by each competitor boat from the time the boat leaves the shore until the time the boat returns to the shore.
- 15.2 A boat that retires from a race shall notify the RC as soon as possible.
- 15.3 Only the RC or PC may protest a boat for breaking SI 16 (Support Boats). This is added to RRS 60.1.

16 SUPPORT BOATS

Team leaders, coaches and other support personnel shall stay outside areas where boats are racing from the time of the warning signal for the first fleet to start until all boats have finished or the RC signals a postponement, general recall or abandonment. This rule is waived for the Opti Green Fleet.

17 PRIZES

Prizes will be awarded as follows:

The number of trophies will be determined by the number of boats entered in each fleet as follows:

1 st	3 registered
1 st , 2 nd	4 to 6 registered
1 st , 2 nd , 3 rd	7 to 9 registered
1 st , 2 nd , 3 rd , 4 th	10 to 13 registered
1 st , 2 nd , 3 rd , 4 th , 5 th	14 or more registered

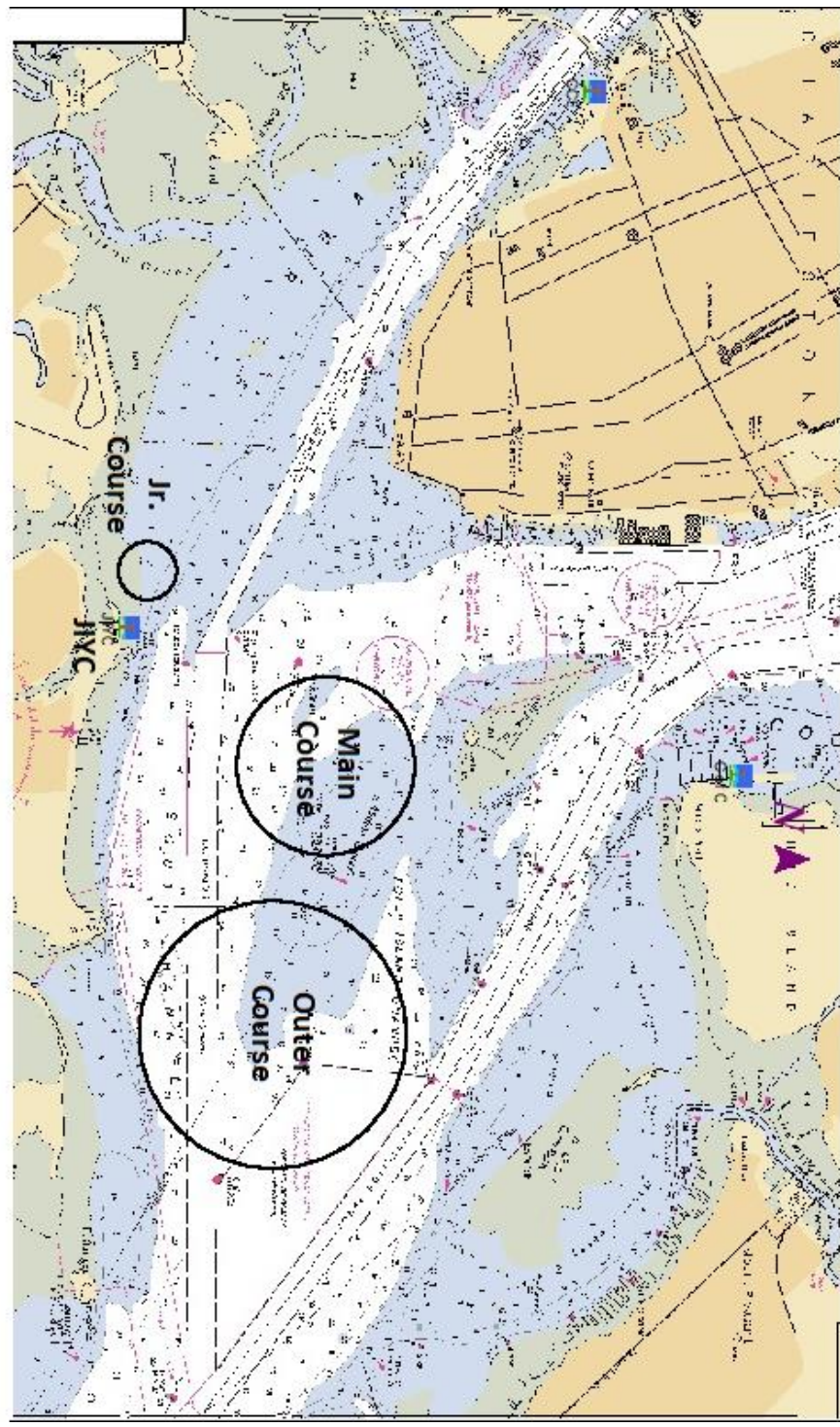
- The A.C. Hollings Perpetual Trophy will be engraved with the name of the first place winner of the fleet with the largest number of registered yacht. The winner will receive an appropriate trophy for his / her retention.
- JIYC will award a special trophy to the youngest JIYC sailing skipper completing all races scheduled in his / her fleet.

18 DISCLAIMER OF LIABILITY

Competitors participate in the regatta entirely at their own risk. See rule 4, Decision to Race. The organizing authority will not accept any liability for material damage or personal injury or death sustained in conjunction with or prior to, during, or after the regatta.

Attachment A – Race Areas

CAPE HATTERAS TO CHARLESTON - 1 : 101,482
(NOA Chart) Chart #11520_1 - Depth Units: FATHOMS

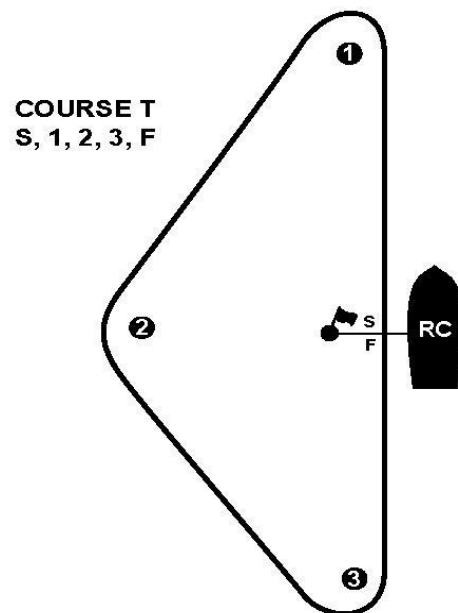
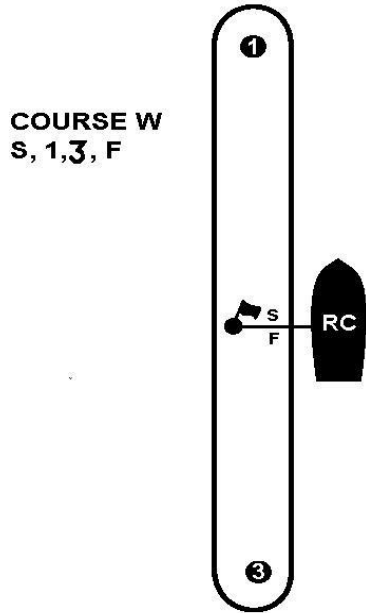


DO NOT USE FOR NAVIGATION

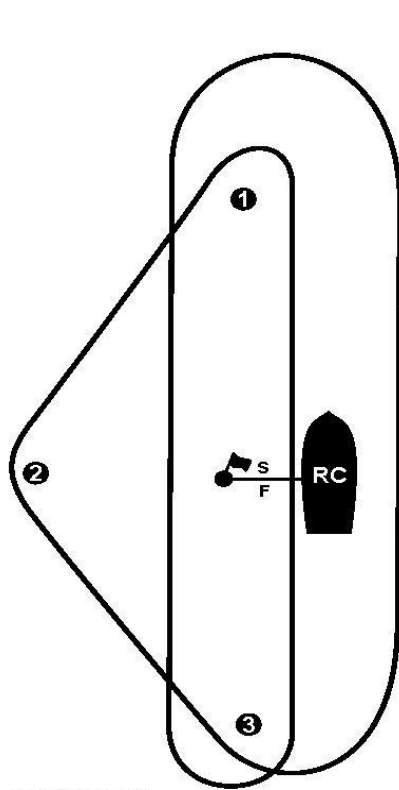
Naval Oceanic - Copyright © 1985-2002 National Oceanic and Atmospheric Administration

JUNIOR COURSE

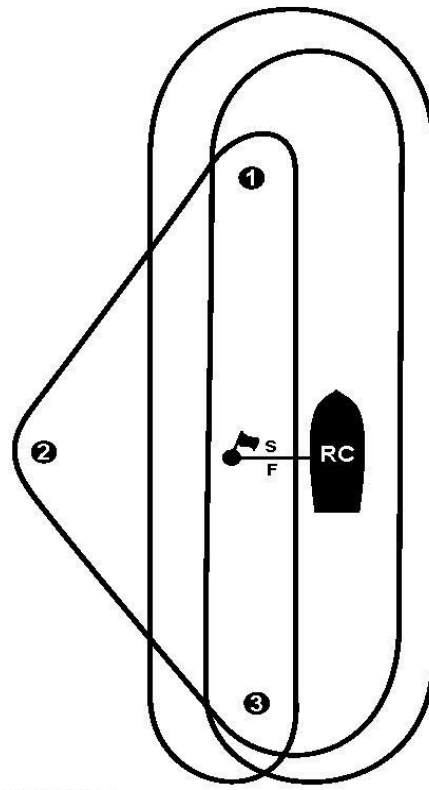
ILLUSTRATION B (page 1)



PLEASE NOTE: These course drawings are schematic. Angles and relative distances will vary.



COURSE O
S, 1, 2, 3, 1, 3, F



COURSE L
S, 1, 2, 3, 1, 3, 1, 3, F



JAMES ISLAND YACHT CLUB OPEN REGATTA
June 20 - 21, 2020
James Island Yacht Club
Charleston, SC

SAILING INSTRUCTIONS – MAIN and OUTER COURSE
(Posted June 15, 2020)

1.0 RULES

The regatta will be governed by the rules as defined in *The Racing Rules of Sailing* (RRS).

2.0 ELIGIBILITY

The regatta is open to yachts of all classes. Classes with four or more boats entered may compete as a class. Sea Island One Design and all Junior classes need only three boats entered.

3.0 NOTICES TO COMPETITORS

Notices to competitors will be posted on the official notice board located at the entrance of the club's Florida room, listed on YachtScoring (<https://yachtscoring.com/emenu.cfm?eID=13008>), and will be sent to the competitor's registration email and phone text.

4.0 CHANGES IN THE SAILING INSTRUCTION

- 4.1** Any change to the sailing instructions will be posted on Friday at the conclusion of the skipper's Zoom meeting, by 1100 on Saturday and on Sunday by 1000 hours.
- 4.2** Oral changes to the Sailing Instructions may be given on the water by hail from the Signal Boat under code flag "L" in accordance with RRS 90.2 (c). Changes must be made before the warning signal.

5.0 SIGNALS MADE ASHORE

- 5.1** Signals made ashore will be displayed from the club's flagpole.
- 5.2** When code flag "AP" is displayed ashore, "1 minute" is replaced with "not less than 30 minutes" in the RRS Race Signal "AP."

6.0 SCHEDULE OF RACES

- 6.1** Races are scheduled as follows:

Saturday - June 20	1200	Online registration closes.
	1255	First Warning
		Other races to follow
Sunday - June 21	1155	First Warning
		Awards Ceremony – Following the Protest Time Limit, Winners will be announced on Zoom and prizes mailed.

- 6.2** The number of races to be sailed will be as many as possible.
- 6.3** No races will be started after 1500 on Sunday, June 21.

7.0 CLASS FLAGS

Main Course

Laser Full	Laser Class Flag
Laser Radial	Purple
Laser 4.7	Yellow
Sunfish	Sunfish Class Flag (White w/ Red Fish)
Club and Collegiate 420	420 Flag
Y Flyer	Y Flyer Class Flag

Outer Course

SIOD	Cygnets II Burgee
Lightning	Lightning White Class Flag
VX One	Purple
Waspz	Yellow
J24	J24 Class Flag
E Scow	E Scow Class Flag

Additional classes registering will be announced at the skipper meeting and uploaded to the YachtScoring page.

8.0 RACING AREA

8.1 Attachment (A) shows the location of racing areas.

9.0 COURSES

9.1 The diagrams in Attachment (B) show the courses, including the approximate angles between legs, the order in which marks are to be passed, and the side on which each mark is to be passed.

9.2 No later than the warning signal, the RC signal boat will display the course to be sailed.

10.0 AREAS THAT ARE OBSTRUCTIONS

The following areas are designated as obstructions: "middle ground".

11.0 MARKS

	Main Course	Outer Course
Marks W, G, L	Yellow Sphere	Orange Cylinder
Starting Mark	White Sphere	White Sphere
Finish Mark	Orange Sphere or pin boat	Orange Sphere or pin boat
Change Mark	Orange Sphere	Yellow Tetrahedral

12.0 THE START

12.1 Races will be started using RRS 26.

12.2 The starting line will be between the staff displaying an orange flag on the RC signal boat on the starboard end of the starting line and the port end starting mark. A boat that has not met the definition of *Start* within 4 minutes after her starting signal will be scored Did Not Start without a hearing. This is in addition to rules A4 and A5.

13.0 THE FINISH

13.1 The finishing line for courses 1, 2, 3, and 4 will be between a staff displaying a blue flag on the finishing boat at the starboard end and the port end orange sphere finishing mark or pin boat displaying an orange flag.

13.2 Any boat that does a two-turns or one-turn penalty will report this fact to the race committee as soon as possible after finishing, giving them the sail number of the boat doing the penalty turns. Only the RC may protest a boat if this rule is broken.

14.0 PENALTY SYSTEM

14.1 PENALTIES AT THE TIME OF THE INCIDENT (RRS V1) - The first two sentences of rule 44.1 are changed to: A boat may take a one turn penalty when she may have broken a rule of Part 2 or rule 31 while *racing*. However, when she may have broken a rule of Part 2 while in the zone around a mark other than a starting mark her penalty shall be a two-turns penalty.

14.2 PENALTIES TAKEN AFTER A RACE (RRS V2) - After a race, a boat that may have broken a rule of part two or RRS 31 while *racing* may take a Post-Race penalty for that incident. A boat takes the penalty by delivering a written notice to the Race Office that identifies the race number and when and where the incident occurred. The penalty shall be a 30% Scoring Penalty, calculated as stated in rule 44.3(c). However, rules 44.1(a) and (b) apply, and the penalty shall not be taken after a protest hearing involving the incident has started.

14.3 Any boat that does a two-turns or one-turn penalty will report this fact to the race committee as soon as possible after finishing, giving them the sail number of the boat doing the penalty turns. Only the RC may protest a boat if this rule is broken.

15.0 TIME LIMITS

15.1 The time limit for the first boat of each class to pass the first *mark* will be 30 minutes.

15.2 The time limit for the first boat in each class to finish is 1 hours.

15.3 Boats failing to finish within **30 minutes** after the first boat sails the course and finishes will be scored Time Limit Expired, TLE. This is an addition to RRS 35 and A4.1.

16.0 PROTESTS AND REQUESTS FOR REDRESS

16.1 Protest forms are available at the race office. Protests and request for redress or reopening shall be delivered there within the protest time limit.

16.2 For each course, the protest time limit is 30 minutes after the Committee Boat reaches the dock. The same protest time limit applies to all protests by the Race Committee and Protest Committee and to requests for redress.

16.3 Notices of scheduled protest or requests for redress hearings will be posted within 30 minutes of the protest time limit to inform competitors of hearings in which they are parties or may be parties affected by a request for redress.

16.4 Hearings will be held in the jury room, located at the meeting room.

16.5 Notices of protests by the Race Committee or Protest Committee will be posted on the official notice board to inform boats under rule 61.1(b) and 61.1(c).

17.0 SCORING

17.1 Low point scoring system will be used as describe in Appendix A except that one score will be excluded after five races have been sailed.

17.2 One (1) race is required to be completed to constitute a series.

17.3 Boats scored TLE will receive 2 points more than the number of boats that finished.

18.0 SAFETY

18.1 US Coast Guard approved floatation device must be carried for each person, on each boat from the time the boat leaves the shore until the time the boat returns to the shore.

18.2 A boat that retires from a race shall notify the race committee as soon as possible.

- 18.3** A boat and its crew shall at all times *keep clear* of all commercial vessels and shall not maneuver in any manner which would cause a commercial vessel to be unable to sail their proper course or carry out their commercial functions in a normal manner.
- 18.4** A boat whose actions or maneuvers result in a Danger Signal (5 Horns or Sounds) from a commercial vessel may be protested.
- 18.5** Only the RC or PC may protest a boat under this Sailing Instruction. This is in addition to RRS 60.1.

19.0. SUPPORT BOATS

Team leaders, coaches and other support personnel shall stay outside areas where boats are racing from the time of the preparatory signal for the first class to start until all boats have finished or the race committee signals a postponement, general recall or abandonment.

20.0 RADIO COMMUNICATION

- 20.1** A boat shall neither make radio transmissions while racing, except for emergencies, nor receive radio communications not available to all boats. This restriction also applies to mobile telephones.
- 20.2** The Race Committee will use VHF channel 71 for the Outer Course and channel 74 for the Main Course. Alternate channels may be used at the discretion of the Race Committee

21.0 PRIZES

Prizes will be given as follows:

The number of trophies will be determined by the number of boats entered in each class as follows:

1 st	4 to 6 registered (except SIOD)
1 st , 2 nd	7 to 9 registered
1 st , 2 nd , 3 rd	10 to 14 registered
1 st , 2 nd , 3 rd , 4 th	15 to 19 registered
1 st , 2 nd , 3 rd , 4 th , 5 th	20 or more registered

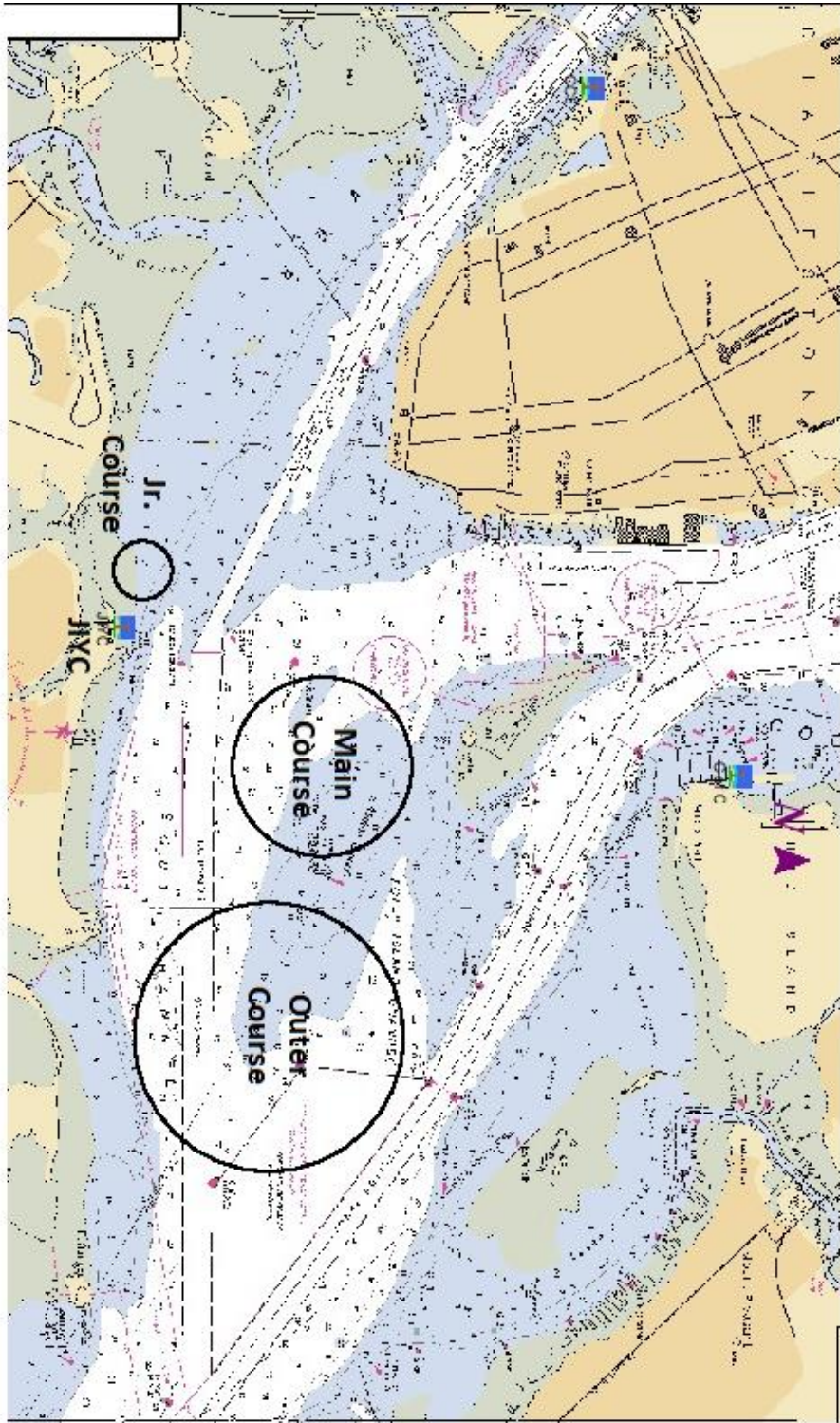
- The A.C. Hollings Perpetual Trophy will be engraved with the name of the first place winner of the class with the largest number of registered yacht. The winner will receive an appropriate trophy for his / her retention.
- The Clyde Easterling Perpetual Trophy will be engraved with the name of the SIOD first place winner. The winner will receive an appropriate trophy for his / her retention.
- JIYC will award a special trophy to the youngest JIYC sailing skipper completing all races scheduled in his/ her class.
- JIYC IOBG will award a special trophy to the oldest JIYC sailing skipper completing all races scheduled in his / her class.

22.0 DISCLAIMER OF LIABILITY

Competitors participate in the regatta entirely at their own risk. See RRS 4, Decision to Race. The organizing authority will not accept any liability for material damage or personal injury or death sustained in conjunction with or prior to, during, or after the regatta.

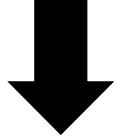
Attachment A

CAPE HATTERAS TO CHARLESTON - 1 : 101,482
(NOAA Chart) Chart #11520_1 - Depth Units: FATHOMS



DO NOT USE FOR NAVIGATION

Naval Service - Copyright © 1985-2000 Hydrographic Corporation 100044-0077



WIND



W MARK

1. S-W-F
2. S-W-L-W-F
3. S-W-L-W-L-W-F
4. S-W-G-L-W-F
5. S-W-L-W-L-W-L-W-F

ALL MARKS TO PORT

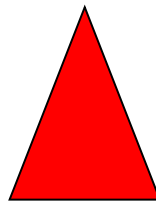


G MARK

L MARK



START PIN



RC



FINISH

Attachment (B)